

▲ A craftsman at Hauser Art Glass Co., Inc. makes the final touches after restoring this Tiffany Window.

▲ This window entitled "City of Winona in Old Hauser Building" depicts Winona in abstract form. It is located on the 2nd floor landing of the Lafayette side of the old City Hall Building at 4th and Lafayette.

Group tours of noted studios

Winona is home to several prominent studios, most of which have been closely-knit, family owned businesses for several generations.

The Hauser Art Glass Co., Inc. with studios in Winona and Philadelphia is the largest stained glass enterprise in the United States. Each year they complete hundreds of projects. Recently these projects have included their award winning restoration of two of the largest Tiffany windows in the world for a Baltimore church as well as the creation of all 41 windows for the new Peachtree United Methodist Church in Atlanta.

Cathedral Crafts Inc. artisans take great pride in restoring stained glass windows designed by Louis Comfort Tiffany, John La Farge, Frank Lloyd Wright, and Munich-Meyer Studio throughout the United States, including a full set of Louis Comfort Tiffany windows for Christ Episcopal Church in Oil City, Pennsylvania.

Cathedral Crafts and Hauser Art Glass Company will conduct group tours, but only with advanced reservations by calling the Winona Convention and Visitors Bureau at (507) 452-0735. In addition, Cathedral Crafts offers a viewing and retail showroom for walk-ins.

On a tour you will likely see the design and assembly of new windows, as well as restoration work, perhaps to some well-known panels.

Other studios do not give tours. The Reinarts Studio, in business for over 50 years, has made many noted windows, including those at the Vatican Chapel in Jerusalem.

Winona also has many smaller companies and independent craftsmen who operate nationwide making and restoring stained glass.

Brochure produced with support from Hauser Art Glass Company, Cathedral Crafts, Winona National Bank, and Merchants Bank.

Winona's

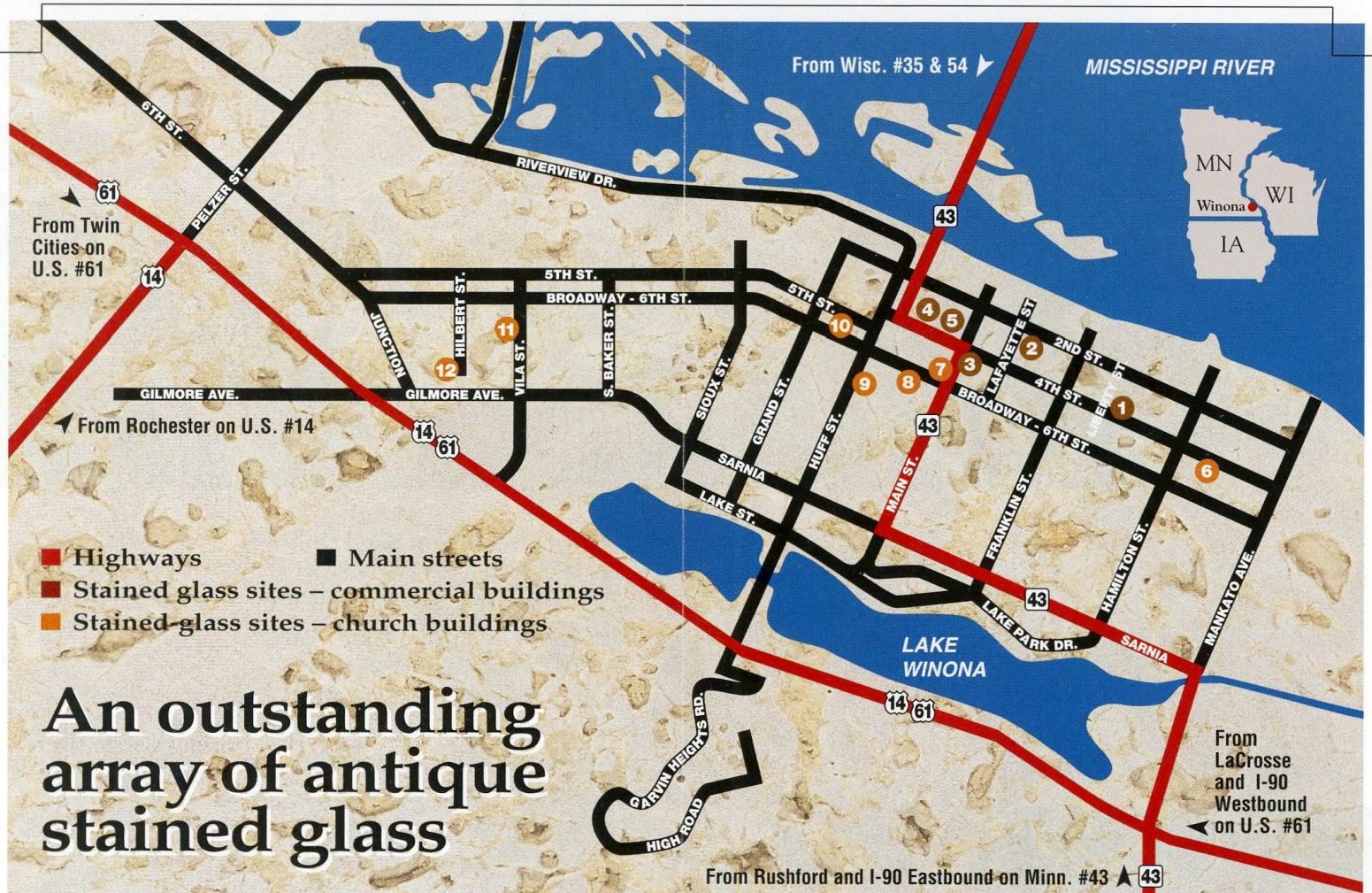
Glorious Glass



▲ Certainly one of the most beautiful windows in North America, the "Sugar Loaf Window" adorns the J.R. Watkins Co. More details about this famous building and its windows inside.

Tour guide to the stunning, stained-glass heritage in...

WINONA
MINNESOTA



An outstanding array of antique stained glass

Founded by a steamboat captain in 1851, Winona's favorable site made it an early lumbering, milling, and transport center... and fabulously wealthy by the 1880's.

As an island of culture in the untamed frontier, many of the city's businesses and churches built lavish structures, often employing noted architects such as George W. Maher, Purcell & Elmslie, and Charles G. Maybury. Extensive stained-glass windows were an integral part of their designs, and the world's finest craftsmen were hired to make them.

Today, the buildings and their glorious windows remain as a symbol of that fascinating era.



SELF-GUIDED TOUR:

Commercial Buildings: Open normal business hours

- 1 J.R. WATKINS COMPANY 150 Liberty St.
- 2 MERCHANTS NATIONAL BANK 102 East Third St.
- 3 WINONA NATIONAL BANK 204 Main St.
- 4 COUNTY COURTHOUSE 3rd St. west of Johnson St.
- 5 COUNTY HISTORICAL SOCIETY 160 Johnson St.

Churches: Please call in advance if you wish to go inside

- 6 CHURCH OF ST. STANISLAUS KOSTKA 452-5430
- 7 CENTRAL UNITED METHODIST 452-6783
- 8 FIRST CONGREGATIONAL CHURCH 452-4829
- 9 CENTRAL LUTHERAN CHURCH 452-5156
- 10 FIRST BAPTIST CHURCH 452-9133
- 11 CHAPEL OF ST. MARY OF THE ANGELS 453-5550

GUIDED TOURS:

For groups of fifteen or more. A tour can include any or all of the sites at left, plus others. Please call in advance to the Winona Convention and Visitors Bureau.



“These excellent windows are from the late Victorian era. Composed of geometric or natural forms embellished with borders, jewels, and prisms, they are similar in design to a book’s frontispiece.”

Charles Nelson,
Minnesota
State Historical
Architect



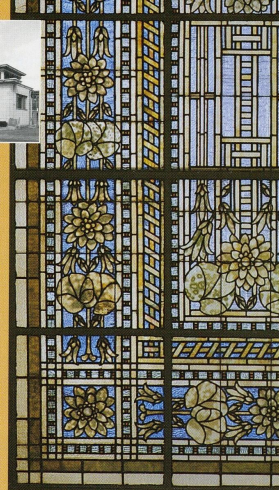
Winona County Courthouse

Designed by the Winona firm of C.G. Maybury & Son and finished in 1889, this building has nearly 100 fine windows. Most are in private offices, but many can be seen from hallways. About twenty windows are in public areas such as stair wells, restrooms, the library, and other rooms that are open if not in use. Take the elevator to the 5th floor and explore downward.



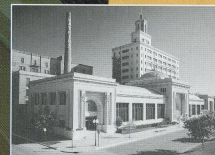
Winona National Bank

Designed by George Maher and built in 1916, this building is a unique interpretation of the “Egyptian Revival” style. The exterior motif is rectangles within rectangles, and is repeated in the marble interior walls, bronze work, furniture, and elegant windows, all made by Tiffany Studios. The glass includes several windows and a huge skylight. The most visible panel is behind the massive columns of the entry. View it from the second floor balcony.



“Made by Tiffany Studios with their famous craftsmanship, the abstract lotus plant design and light colors of Maher’s windows give the interior of this bank a bright, airy feel, which is unusual for its era.”

Helen Cleveland,
Architectural Historian



“The rich tonality of the Minnesota landscape dominates the stained glass as well as the exquisite marble, mosaics, and mahogany in the Watkins Building. It is one of Maher’s masterpieces.”

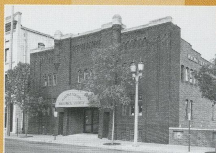
Kathleen Cummings,
Architectural Historian

J.R. Watkins Company, Administration Building

Designed by Chicago architect George W. Maher, this was considered to be the finest private office building in the world when finished in 1912. The exterior is stunning in its line and proportion, noted at the time for its “modern classic style.” The large art glass window at the main entrance depicts Winona’s famous “Sugar Loaf Mountain.” Art glass skylights crown the office spaces, and two more beautiful windows adorn the north and south entrances. Artist Louis J. Millet, who often worked with Maher and with Louis H. Sullivan, collaborated with Maher to design the Watkins’ glass, which was part of a unified decorative scheme for the building.

Winona County Historical Society

This building has extensive historical displays including a large, original window. Designed by Winonan Ed Glubka and made by Conway Studios, it depicts the history of Winona County.



Merchants National Bank

The best-known structure designed by noted architects Purcell and Elmslie, the Merchants National Bank (completed in 1912) uses stained glass not for mere adornment but as the major design theme. The two main facades and the ceiling are huge glass displays that span more than 1500 square feet. Made by the Mosaic Art Shops of Minneapolis, the glass and its beautiful, golden light dominates the interior, which is best viewed from the second-floor balcony overlooking the lobby.

“Merchants Bank is one of the most significant Prairie-Style buildings in the U.S. Of special note is the superb stained glass by George Elmslie, who ranks second only to Frank Lloyd Wright as a Prairie-Style designer.”

Larry Millett,
Architecture Writer,
St. Paul Pioneer Press

